



Installation Manual

TABLE OF CONTENTS

INTRODUCTION.....3

NETWORK MODULE CONNECTIONS3

NETWORK MODULE INSTALLATION.....3

EXAMPLES OF NETWORK CONNECTION.....6

IP ADDRESS CHANGING7

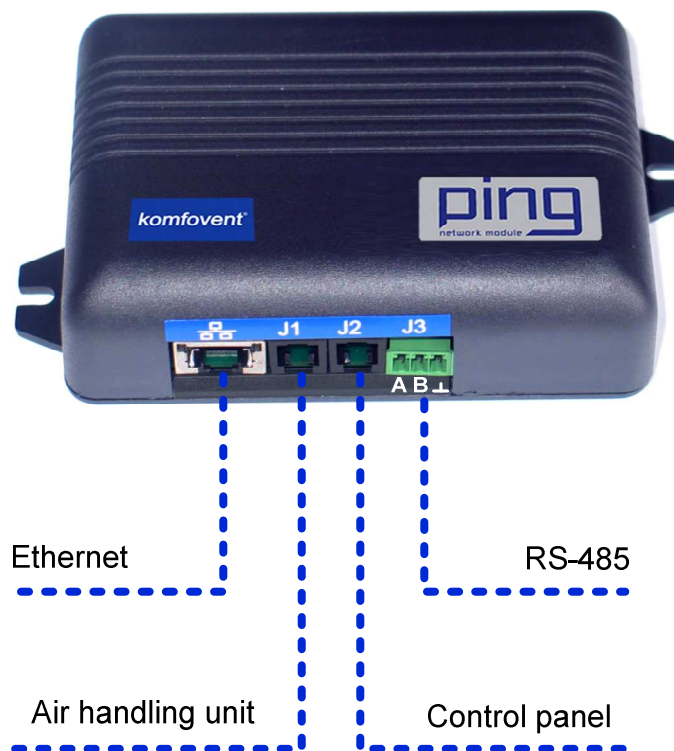
MODBUS ADDRESS CHANGING.....10

INTRODUCTION

Network module “Ping” is intended for connection of KOMFOVENT air handling units to the computer network (Ethernet) or another network (RS-485). If “Ping” module is not added by factory, it can be installed on each air handling unit (AHU) additionally (except units with C2 controller). For this case user need to have installation kit:

1. Network module („Ping“).
2. Additional connection cable (5 m.).
3. CD with software and manuals.

NETWORK MODULE CONNECTIONS



NETWORK MODULE INSTALLATION

1. Network module can be installed provided place under given following conditions:
 - ambient temperature range 0°C ... 40°C;
 - relative humidity limits 20% ... 80%;
 - protection must be ensured from accidentally vertically falling water drops (IP X2).

2. After Network module is installed in provided place control panel needed to be disconnected from air handling unit:



3. Disconnected from the panel cable connect to the “Ping” module J1 socket:



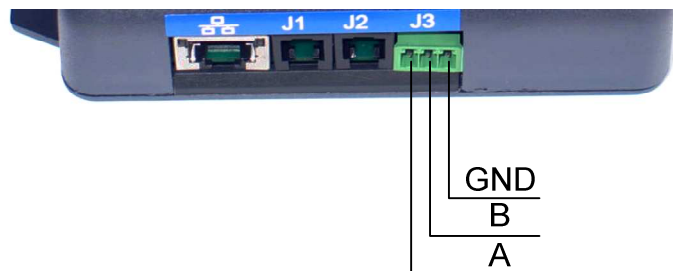
4. Connect one end of the cable from installation kit to the panel and another end to J2 socket of “Ping” module:



5. If AHU is connected to the computer network, standard CAT5E UTP cable is connected to “Ethernet” socket:

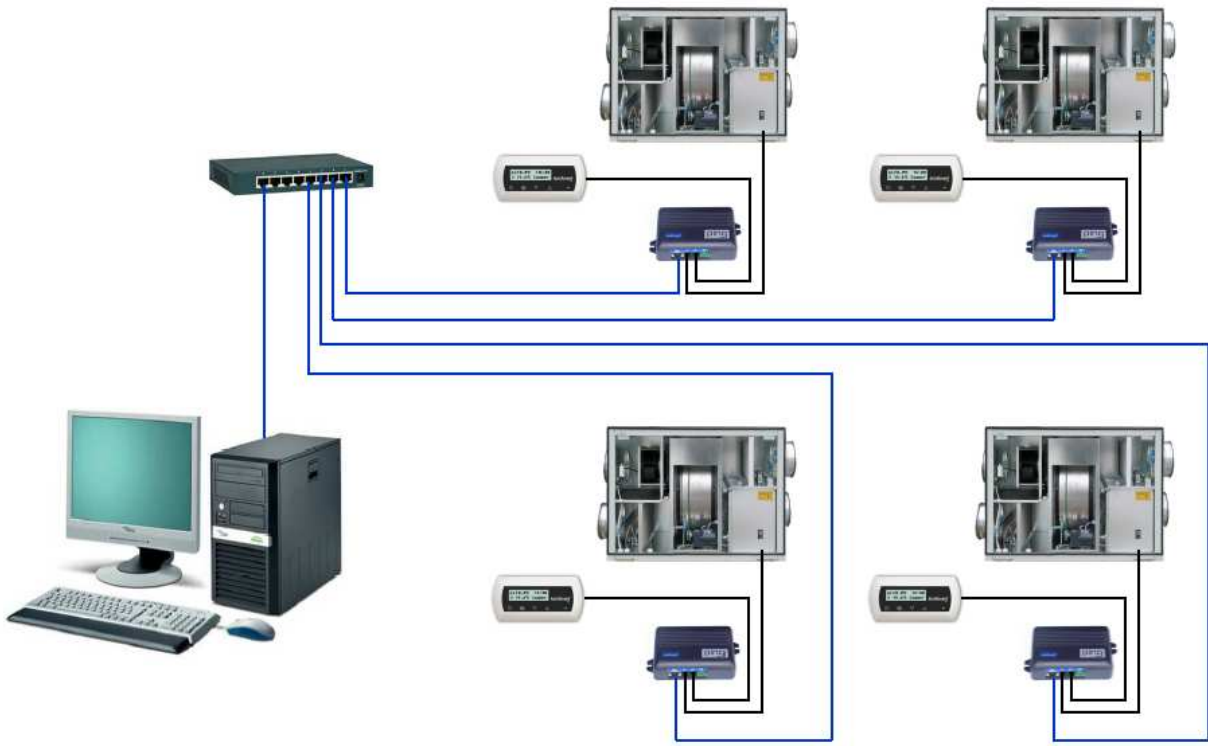


6. For connection of air handling unit to the another MODBUS RTU based network is provided RS485 serial interface. MODBUS network line is connected to J3 socket of “Ping” module. J3 socket type: : PHOENIX CONTACT - MC 1,5/3-ST-3,5 - PLUG, FREE, 3.5MM, 3WAY):

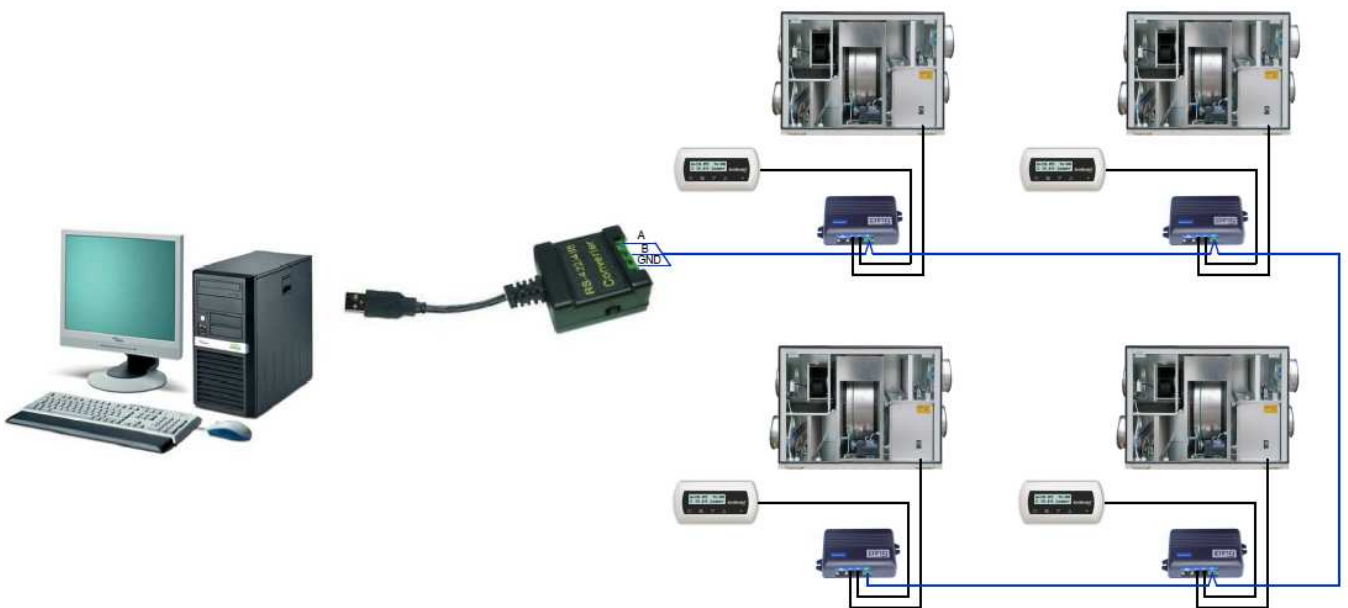


Note: In one serial line of RS-485 network may be connected **not more as 30** “Ping” modules.

EXAMPLES OF NETWORK CONNECTION



Picture 1. Connection through “Ethernet” network



Picture 2. Connection through RS485 line

IP ADDRESS CHANGING

For working of AHU's in „Ethernet“ network each „Ping“ module must have different IP address. Default addresses are:

IP address – 192.168.0.29
 Gateway address – 192.168.0.1
 Subnet mask – 255.255.255.0

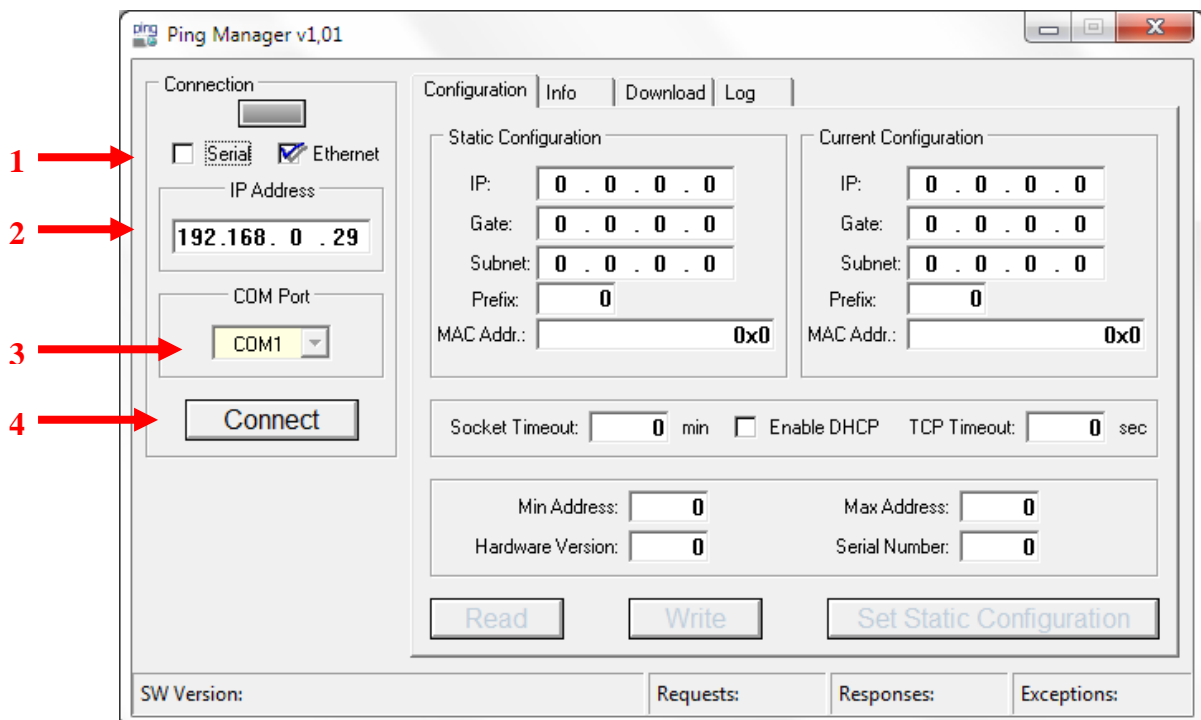
There is possibility to change these network addresses if standard does not fit by connection through „Ethernet“ or J3 socket using standard USB-RS485 adapter.

Network addresses changing sequence is described below:

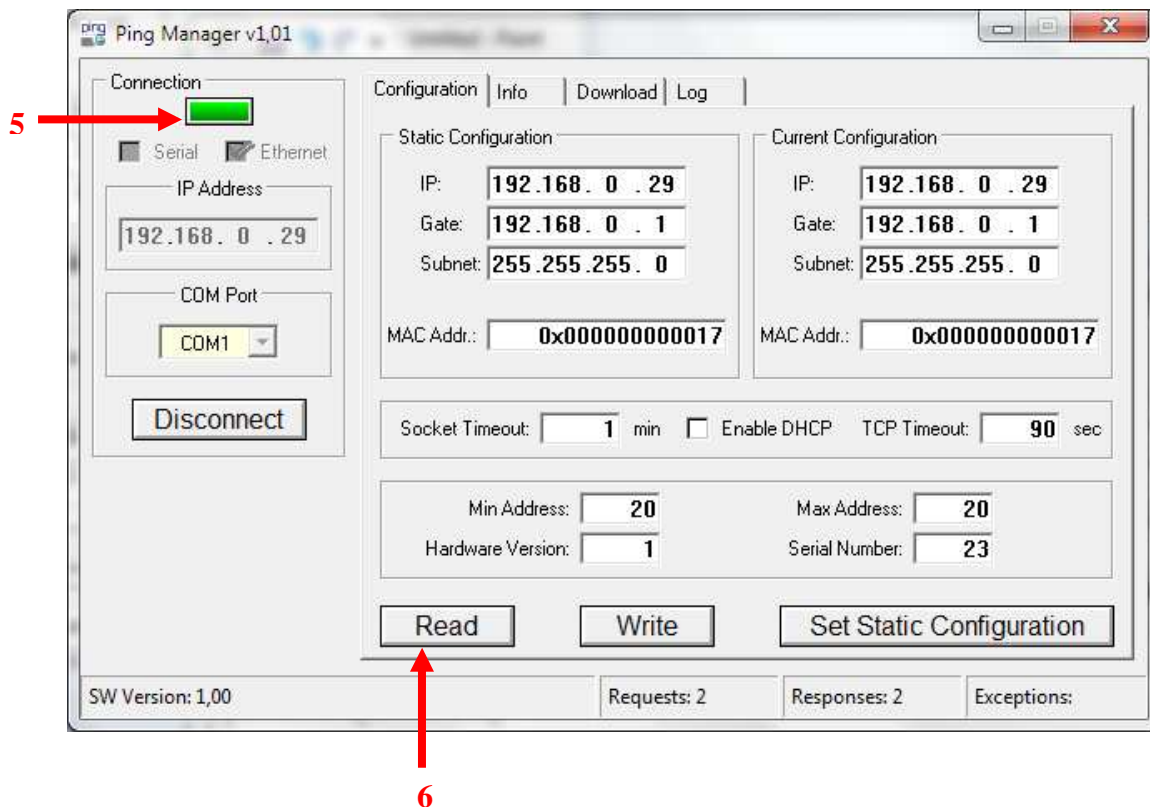
1. After software is installed from included CD, run in you computer the “Ping Manager” program:



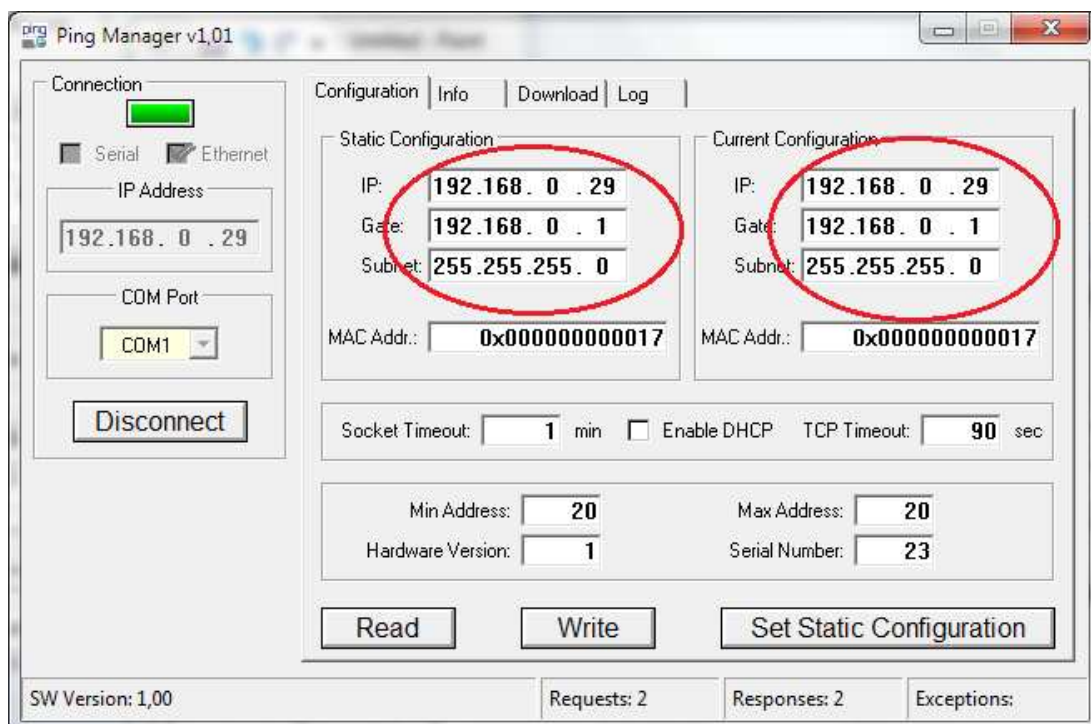
2. In left side of “Ping Manager” program is selected connection type (1). For ”Ethernet” connection needed to enter default IP address (2), if ”Serial” – select right serial port (3) COM1...4 and press ”Connect” button (4):



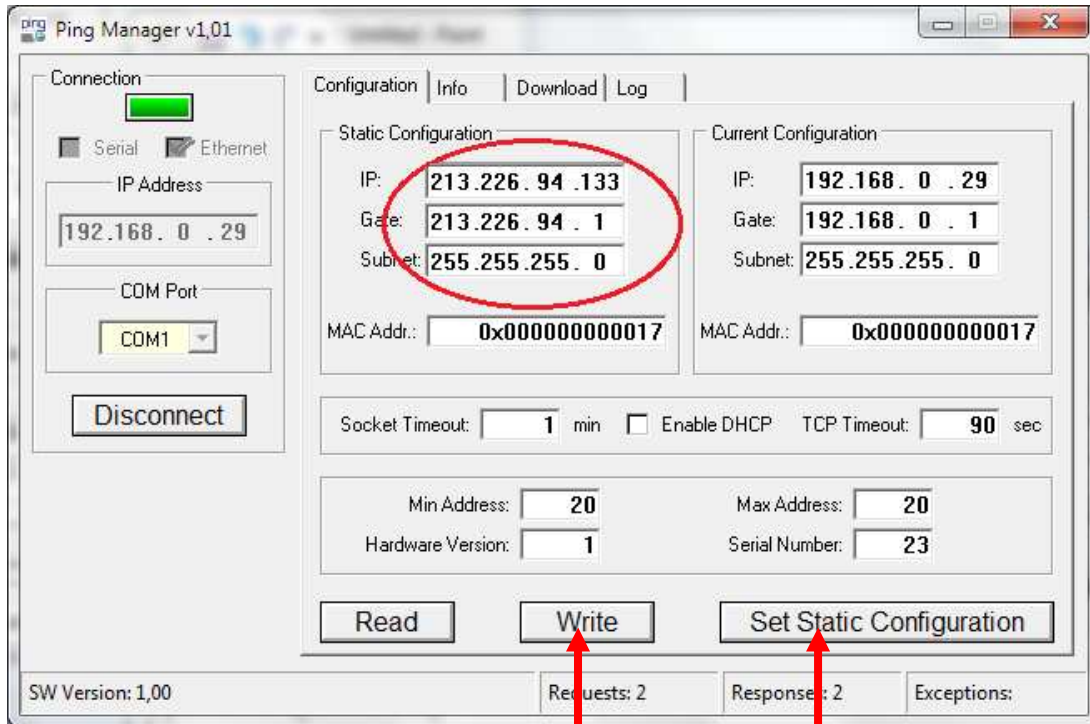
- The green light (5) indicates that connection between computer and network module is enabled. There is possibility to see programmed network addresses by pressing “Read” button (6):



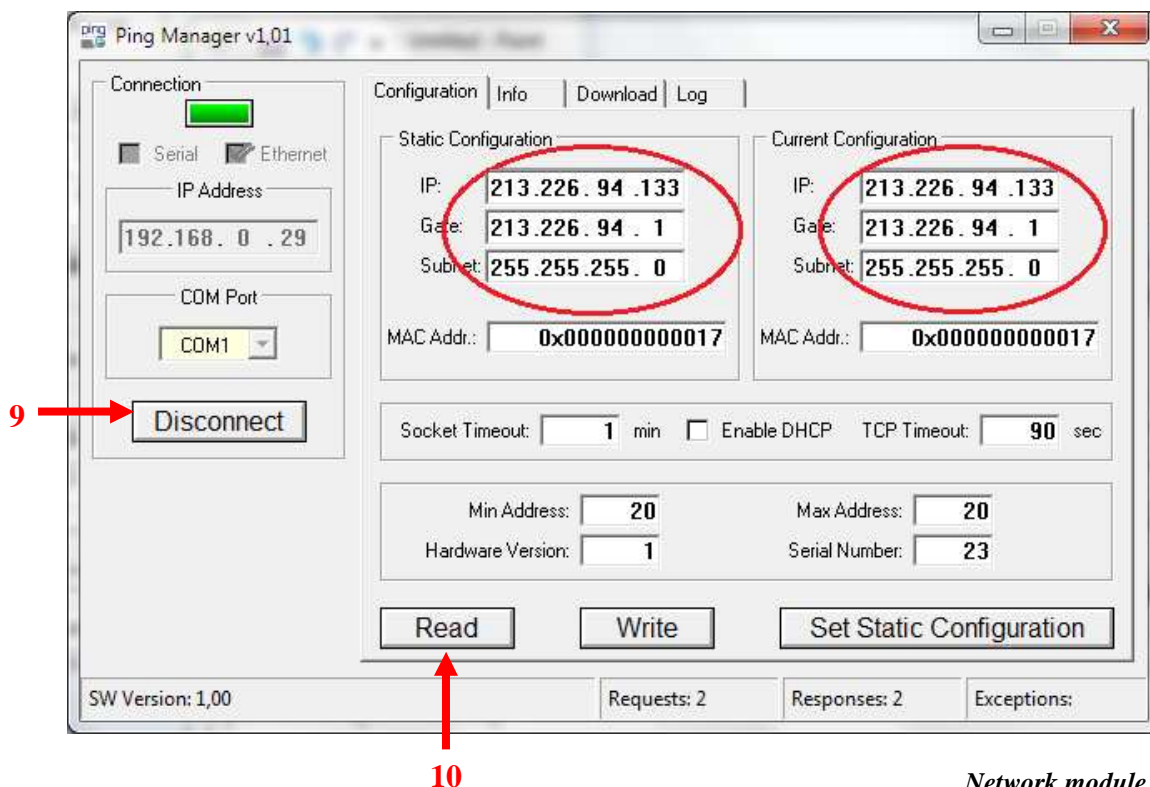
- Programmed network addresses are displayed in “Static Configuration“ and “Current Configuration“ columns:



5. For changing network addresses first there is a need to erase current addresses located in “Static Configuration” column. Then, in „Static Configuration“ column, in IP cell should be written a new IP address (213.226.94.133), in “Gate“ cell – new gateway address (213.226.94.1), in “Subnet“ cell – subnet mask address (255.255.255.0). To save a new addresses first must be pressed „Write“(7), and then „Set Static Configuration“(8) button:

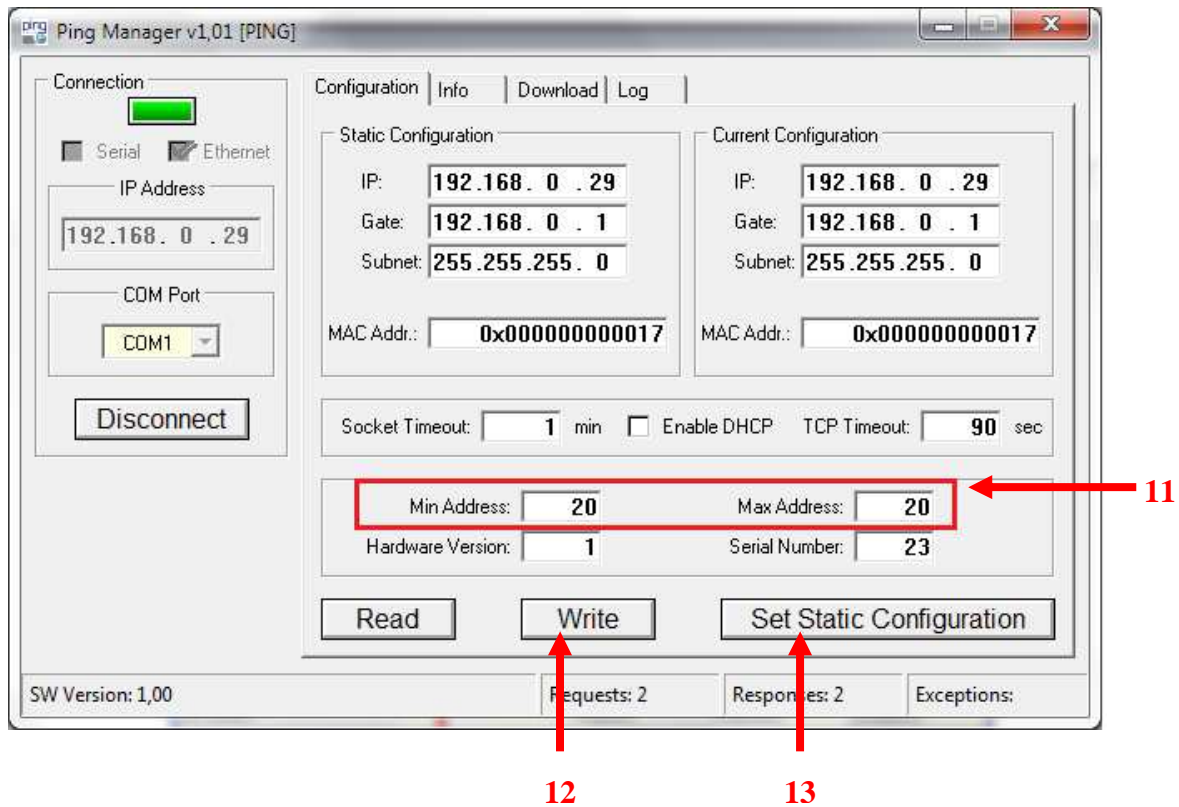


6. Restart connection (9) and by pressing “Read” button (10) a new network addresses will be shown in “Static Configuration“ and “Current Configuration“ columns:



MODBUS ADDRESS CHANGING

If air handling units are connected to serial RS485 line, for each “Ping” module is needed to select MODBUS address for retranslation. For it using one of the above mentioned connections (Ethernet or RS485) in “Ping Manager” program must be inserted retranslating address (11), push the “Write” button (12) and after few seconds push „Set Static Configuration” (13):



Note: If “Ping module should retranslate only one address, write the same address in the program „Min Address“ and „Max Address“ windows (example, 20). If to the serial connection of “Ping” module is connected more that one unit, then is needed to write interval of retranslating addresses (example, Min. Address 1, Max Address 20).