

16022500004023
WIRING DIAGRAM
(INDOOR UNIT)
FUNCTION OF SWITCH

SWITCH	FOR CCM UNIT ADDRESS	
S2 + S1		
ADDRESS	0~15	16~31
Factory Setting	✓	
S2 + S1		
ADDRESS	32~47	48~63
Factory Setting	✓	

SW2 SWITCH	FOR FAN MOTOR CONTROL THEN NO POWER REQUEST.	
ON STATE		
MODE	FAN OFF	FAN ON
Factory Setting	✓	

SW3 SWITCH	FOR AUTO-RESTART SETTING	
ON STATE		
MODE	REMEMBER	NO_REMEMBER
Factory Setting	✓	

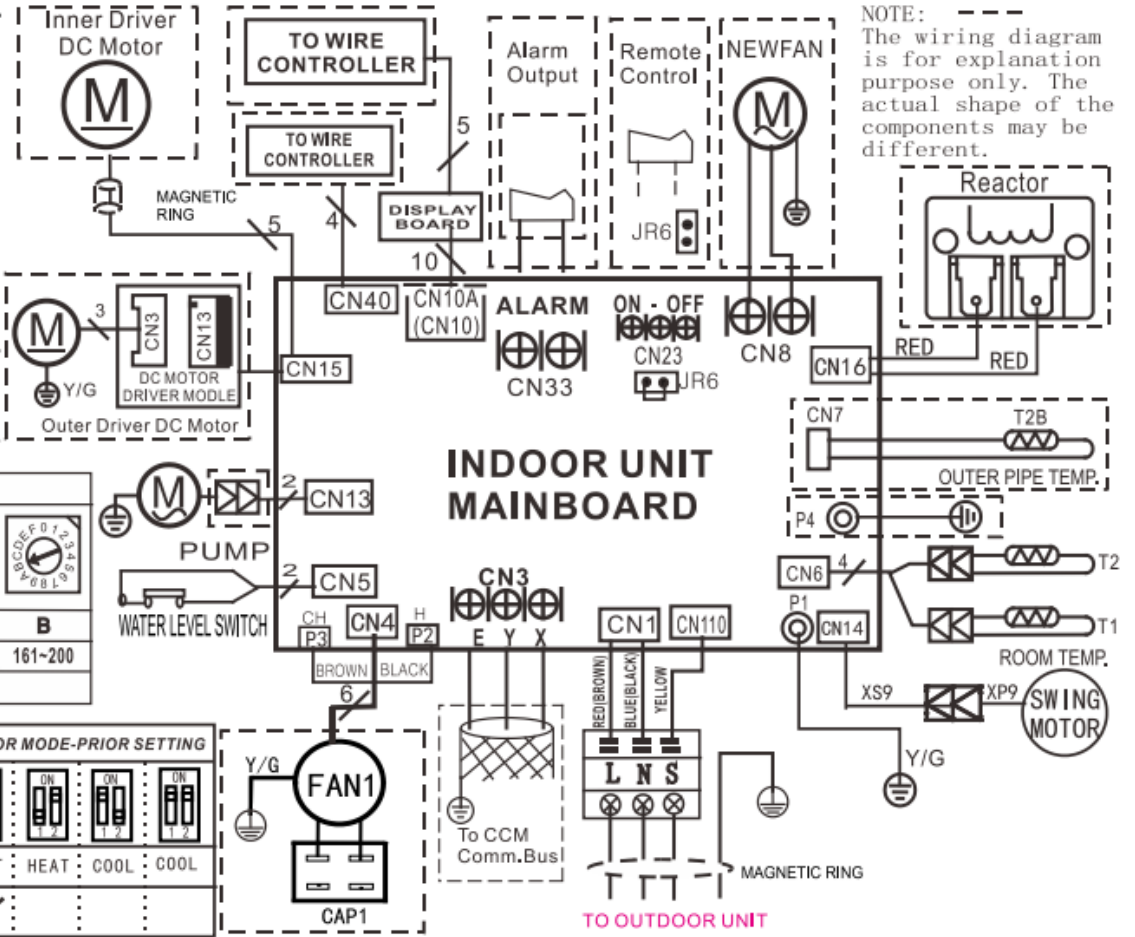
Anti-cold air	
SW1	FAN MOTOR STOP-TEM
	24 Factory setting ✓
	15
	8
	According to the EEPROM setting

FOR SETTING POWER(DC MOTOR MODEL ONLY)										
ENC1										
CODE	0	1	2	4	5	7	8	9	A	B
POWER	20	26	32~35	36~53	54~71	72~90	91~105	106~140	141~160	161~200
FACTORY SETTING	ACCORDING TO RELATED MODEL.									

SW7 SWITCH	FOR COOLING & HEATING OR COOLING ONLY SETTING	
ON STATE		
MODE	COOLING & HEATING	COOLING ONLY
Factory Setting	✓	

SW6 SWITCH	FOR TEMP. COMPENSATION			
ON STATE				
VALUE	6	4	2	E function
Factory Setting	✓			

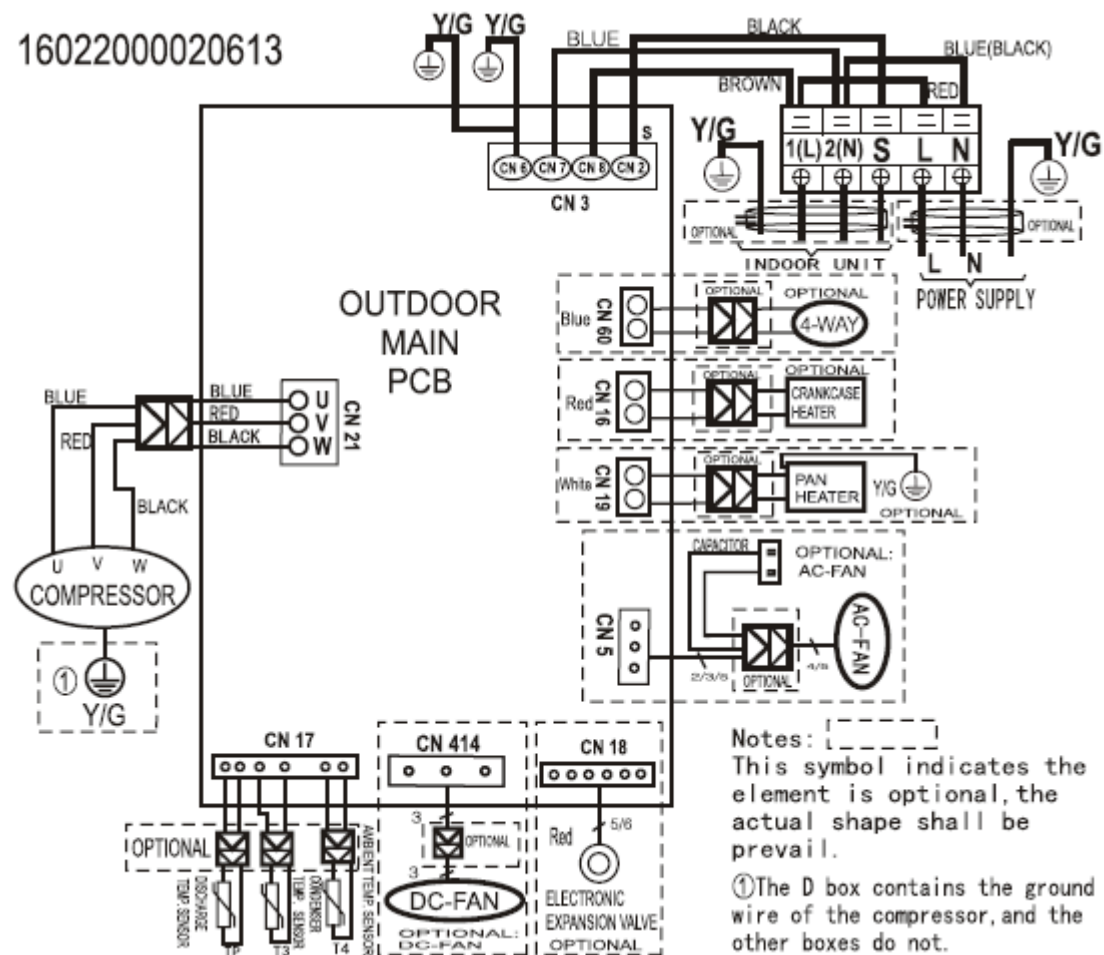
SW5 SWITCH	FOR MODE-PRIOR SETTING			
ON STATE				
MODE	HEAT	HEAT	COOL	COOL
Factory Setting	✓			



NOTE:
 The wiring diagram is for explanation purpose only. The actual shape of the components may be different.

Model:	
	ACI-71HRDC1A
	Wiring diagram

16022000020613



Notes:
 This symbol indicates the element is optional, the actual shape shall be prevail.
 ①The D box contains the ground wire of the compressor, and the other boxes do not.

Model:	
	AOU-71HRDC1C
	Wiring diagram